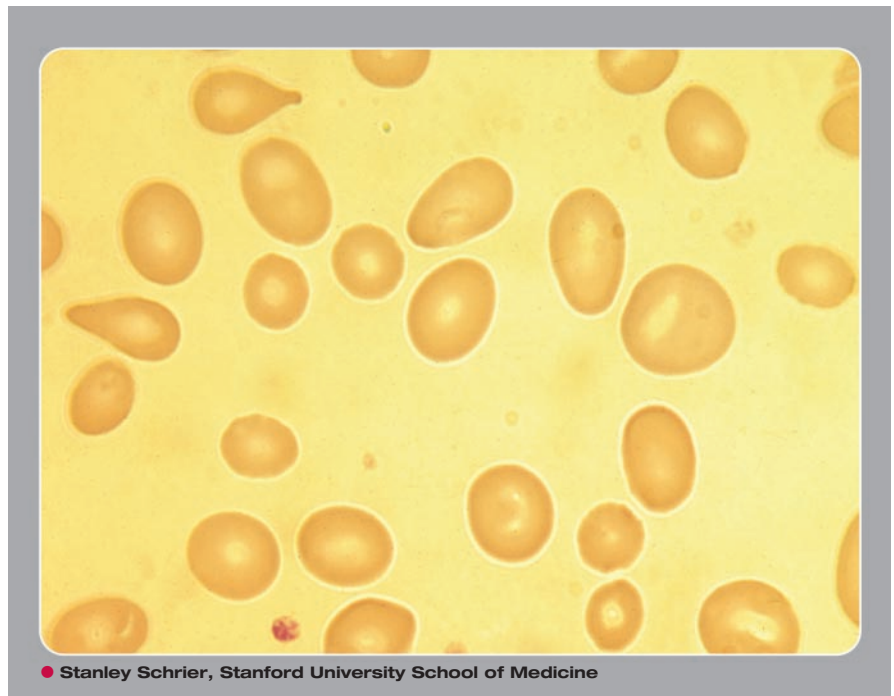


Peripheral smear in pernicious anemia



Note the macro-ovalocytes with tailed forms characteristic of vitamin B₁₂ or folate deficiency states.



THE ASH IMAGE BANK, a reference and teaching tool, is continually updated with new atlas images and images of case studies. For more information or to contribute to the Image Bank, visit www.ashimagebank.org.